

## HOMEPLUG Wireless Kit



 Powerline speed  
up to 500Mbps

 Wireless speed  
up to 300Mbps

7WHP530  
AV500 300Mbps Wireless  
Powerline Adapter

7WHP150  
Mini Homeplug AV  
Ethernet Adapter

 Powerline speed  
up to 500Mbps

# Qualcomm Chip Solution

Allowing you and your family to enjoy a stable and smooth network live!

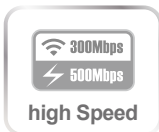
## Powerline Av Wireless Kit

7WHP530KIT

This 7WHP530 Kit units help you start a homeplug network and connect additional devices wirelessly to the internet. With this kit, you can add an extra wireless hotspot to any room in your house to connect extra devices wirelessly, ideal for areas with insufficient wireless coverage.

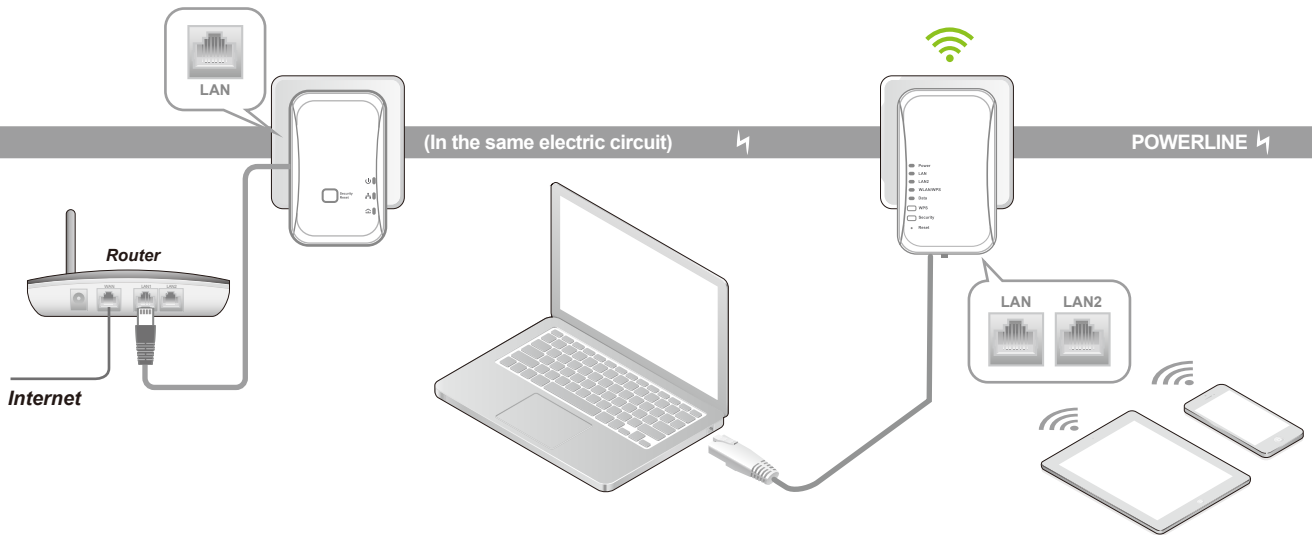
In addition, the two Fast Ethernet ports let you connect up to two devices per cable, ideal for devices that are not equipped for wireless Internet such as older generations of game consoles, Blu-ray players or desktop PCs.

7WHP530KIT is designed for PHY rate up to 500Mbps, and 300Mbps across wireless(802.11n). Both units are equipped with Atheros AR7420 chipset for powerline part, the wireless extender is up to 500 Mbps and Wireless N speeds up to 300 Mbps. This rapid transmission speed makes it ideal for bandwidth-intensive applications.

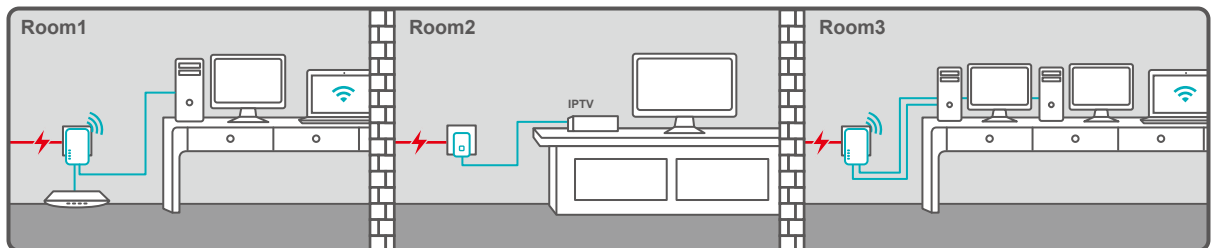


# Product Features

- High Speed Efficient Transmission: Atheros chipset; 500Mbps Powerline; 300Mbps Wireless transmission
- Auto detect wireless signal around, avoid interference, select the best channel
- Support QAM 1024/256/64/16/8, QPSK, BPSK, and ROBO modulation schemes
- 128-bit AES Link Encryption with key management for secure power line communications
- Dynamic channel adaptation and channel estimation maximizes throughput in harsh channel conditions
- Energy-Saving Design With Low Power(1. Firmware Support sleep mode; 2. Support manual power off)
- Limit The Number Of Users (Maximum 32 wireless users per device)
- Support AP Isolation, Prevent the connected devices to access each other, guard each user's data security
- Domain Name Customization, Static/Dynamic IP access DHCP for domain name visit, no need to enter IP address
- Support Watchdog, MAC Address Filtering, Graphics Verification



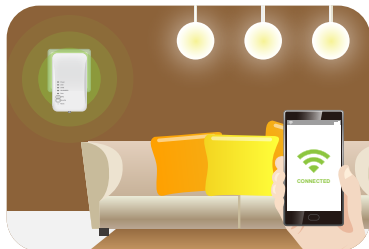
## Freely extend your network, no cabling



# Applications

## High Efficient Seamless Coverage with Low Cost

Additionally, the other 7WHP530 extend signal wirelessly with high speed transfers without the need for unsightly network cables. More 7WHP530 can be added to get more wireless range (Suggest maximum 7pcs extender can be added)



# Physical Information

## 7WHP530

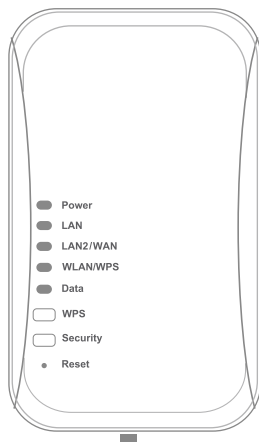
**Casing Color:** White

**Physical Dimensions:**  
L:102 x W:61 x D:45 mm

**Unit weight:** 120 grams

**Antenna:**  
2xInternal antennas

**External Connectors:**  
1 x Power Plug  
2 x Ethernet LAN Port  
1 x WPS Button  
1 x Security Button  
1 x Reset Button  
1 x Power ON/OFF



## 7HP150

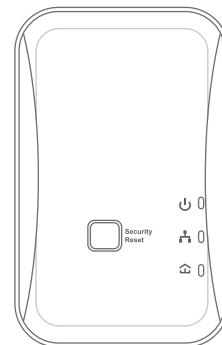
**Casing Color:** White

**Physical Dimensions:**  
L:70 x W:56 x D:30 mm

**Unit weight:** 110 grams

**LED Indicators:**  
Power, Ethernet, Data

**External Connectors:**  
1 x Power Plug  
1 x Ethernet LAN Port  
1 x Button to press for an easy secure pairing between plugs and for a reset to return to initial configuration



### Accessories:

1 x 7WHP530 Powerline wireless adapter    1 x 7HP150 Powerline ethernet adaptor    2 x Ethernet cable    1 x User Manual

# Technical Specifications

## 7WHP530

### HomePlug :

**Standard:** HomePlug AV

**Chipset:** AR7420

**Transmission Speed:** 500Mbps

**Peak Throughput:** 95Mbps UDP, 95Mbps TCP

**Range:** 300m

**Modulation Scheme:**

4096/1024/256/64/16/8-QAM, QPSK, BPSK and ROBO

**Frequency:** 2MHz~68MHz

**Wireless Receiving Sensitivity:** N/A

**Wireless Output Power:** N/A

**Media Access:** priority based CSMA/CA

### Wireless :

**Standard:** IEEE 802.11b/g/n

**Chipset:** Atheros AR9533

**Transmission Speed:** 300Mbps

**Range:** 300m

**Modulation Scheme:**

11b: CCK, DQPSK, DBPSK

11g: 64 QAM, 16 QAM, QPSK, BPSK

11n: 64 QAM, 16 QAM, QPSK, BPSK

**Frequency:** 2.4GHz~2.484GHz

**Wireless Receiving Sensitivity:** 802.11n: -61dBm

**Wireless Output Power:** 17dBm

**Media Access:** CSMA/CA

### Port/LED/Button :

#### WAN Port:

One RJ45 (IEEE 802.3 10/100Mbps), could be configured to LAN Port

**LAN Port:** One RJ45 (IEEE 802.3 10/100Mbps)

**LED:** Power, LAN1, LAN2, Data, WLAN

**Button:** Security, WPS, Reset, Power Switch(Optional)

#### Power Supply :

100~240 VAC, 50/60Hz

#### Power Socket :

EU, UK, US, CN, AUS

#### Power Consumption :

6.5W Operation

#### Environment Requirement :

**Operating Temperature:** 0° to 45° C

**Storage Temperature:** -40° to 70° C

**Operating Humidity:** 10% to 90% Non-condensing

**Storage Humidity:** 5% to 90% Non-Condensing

## 7HP150

### Standards:

Powerline: HomePlug AV

Ethernet: IEEE 802.3 10/100 Auto MDI/MDIX

Energy Saving: EuP Compliance

**Protocol:** TCP/IP, IGMP, QoS CSMA/CA

**Data Transfer rate:** Up to 500Mbps over powerline

**Transmission Range:** Up to 300m over powerline

**Frequency band:** 2Mhz to 30Mhz

### Security & Protection:

128-bit AES encryption (enabled with Simple Connect button)

### Modulation Technology:

OFDM 1024/256/64/16/8 QAM, QPSK, BPSK and ROBO

Modulation Scheme

### Power Consumption:

Normal: less than 3 Watt

Power save: less than 1 Watt Average

### Operating System:

Windows 98SE/ME/2000/2003/XP/Vista, Windows7, Linux, Mac OS

**Power Requirement:** AC 100 ~240V, 50~60Hz

### Temperature:

Operating: 0° to 40° Celsius

Non-Operating : -25° to 70° C

### Humidity:

Operating: 10%~90%, Non-condensing

Non-Operating : 5%~90%, Non-condensing

**NOTE:** Specifications subject to change without prior notice.